

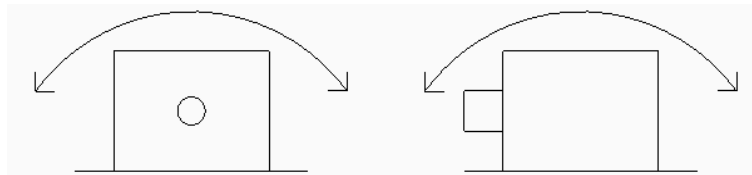
TILT SWITCH - DUAL

PART NUMBER: TSW2



GENERAL OPERATION

The tilt switch operates by measuring the earth's gravitational field with a three axis accelerometer. The output is on when at 0° and off when angle is greater than ± 45° in a dual axis (x & y).



GENERAL INFORMATION

ENCLOSURE

Diecast Aluminium

Length (including flange) = 77mm

Width = 50mm

Height = 32mm

Epoxy Resin filled

ELECTRICAL

Module Operating Voltage

9 - 36 VDC

Switching Angle

± 45°

Relay Output (wire 5)

5 Amps maximum.

CONNECTIONS

Wire - Red

+24V - Input

Wire - Black

Ground

Wire - Brown

Switch Output (Normally Closed)