

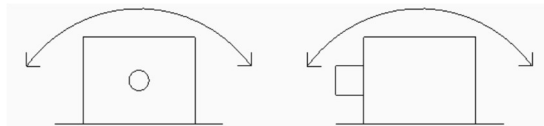
TILT SWITCH

PART NO. TSW2



GENERAL OPERATION

The tilt switch operates by measuring the earth's gravitational field with a three axis accelerometer. The output is on when at 0° and off when angle is greater than ± 45° in a dual axis (x & y).



GENERAL INFORMATION

ENCLOSURE

Diecast Aluminum

Length (including flange) = 82mm
Width = 57mm
Height = 38mm

ELECTRICAL

Module Operating Voltage
Switching Angle
Relay Output (wire 5)

9 - 36 VDC
± 45°
5 Amps maximum.

CONNECTIONS

Wire - Red
Wire - Black
Wire - Brown

+24V - Input
Ground
Switch Output (Normally Closed)

MOUNTING

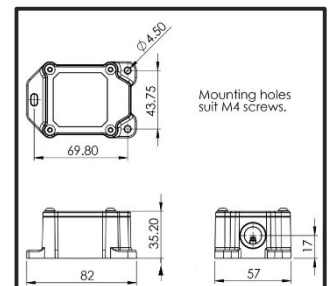
4 x mounting holes – suit M4 screws.

The switch is pre-set in floor (horizontal) mounting mode.

If you intend to mount it vertically, then please do the following calibration:

Before calibrating, the switch must be mounted with in 5 degrees of the orientation in which it is to work.

If the switch is to be operated on a normally inclined surface at greater than 5 degrees, then calibrate the switch before mounting.



With power off – press & hold down the calibration button whilst turning the power back on.

Release the button when the led stops flashing and the light is solid green. The calibration is complete.

CAED PTY LTD

6 CESSNOCK ST
CESSNOCK. NSW. 2325
Ph: 0249 912567

Email: caed@caed.com.au Web: www.caed.com.au