

WATER TRUCK CONTROL SYSTEM

PART NO. MMCS-WT



BRIEF SYSTEM DESCRIPTION

The controller is a small size (147 x 113 x 46 mm) and all indication is via a bright Touchscreen Display (272 x 191 x 42 mm).

The Water Truck Control system has the following functions in the one unit which should cater for any option your customer requires.

- Idle Timer (option)
- E/stop indication with Steer and Brake Bleeddown control
- Auto Lube Control and Fail Detection
- Ladder Down indication
- Access Light Timer
- Anti-Start function
- Anti-Crank function if engine running
- Shutdown Alarm (both immediate and delay shutdown options) handling & indication
- Warning Alarm & indication handling
- Auxiliary lights control
- Water tank and Foam tank level display
- Water spray control (Normal, Flood, Tyre Fire)
- Body control
- PTO control
- Water pump control
- Battery Over voltage / Under voltage alarm
- Ladder Auto Raise if Park Brake released (or Blade raised) (option)

This product is flexible and can be customised to your needs for other ideas or requirements.

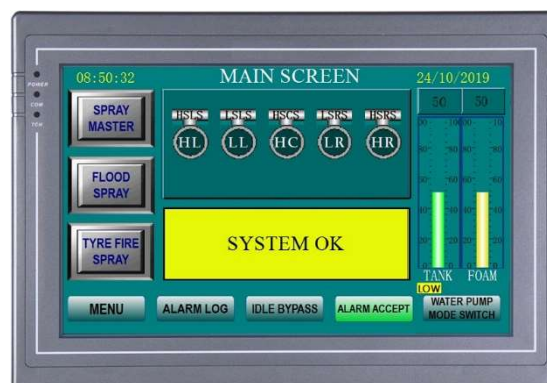
START UP SCREEN (MODEL CHECK SCREEN)



- When the screen is first powered up, it will display the detail of which program is installed.
- The above description is the default setting.



MAIN / SPRAY SCREEN



When the touchscreen is powered up, the above screen will be displayed.

ADDITIONAL SCREENS

MENU



CANNON DIAGNOSTIC



TANK DIAGNOSTIC



TEST



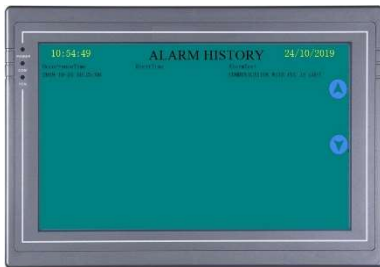
WATER LEVEL OVERRIDE



CALIBRATION



ALARM LOG

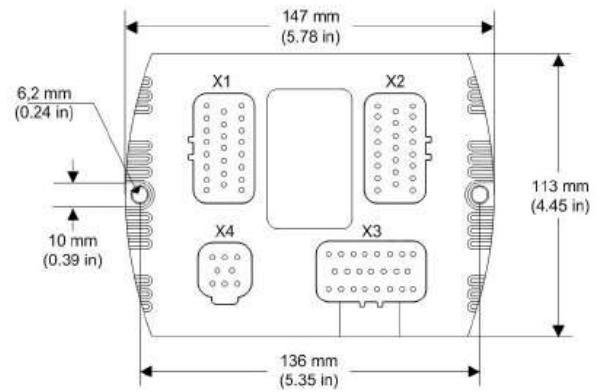


ALARM MESSAGES AVAILABLE

SYSTEM OK	ENGINE OVERSPEED ALARM CALL SHOP	LADDER DOWN AND PARK BRAKE RELEASED	BRAKE OVERTEMP WARNING
3 MINUTES IDLE DOWN ACTIVATED	E/STOP CIRCUIT COMPROMISED	SPRAY SYSTEM HYDRAULIC FILTER PLUGGED	ENGINE OIL PRESSURE IS LOW
LADDER DOWN	CAB E/STOP IS ACTIVATED	ENGINE COOLANT LOW ALARM	AFTER COOLANT LEVEL LOW ALARM
AUTO LUBE FAIL (PRESSURE)	FIRE SYSTEM ACTIVATED	WATER TANK LEVEL LOW ALARM	BRAKE OVERTEMP ALARM CALL SHOP
DOOR OPEN AND PARK BRAKE RELEASED	FIRE SYSTEM PRESSURE IS LOW	FOAM TANK LEVEL LOW ALARM	KEY SWITCH OFF AND PARK BRAKE RELEASED
LIVE FUELING	OVER VOLTAGE (OVER 29V)	FOAM TANK LEVEL LOW WARNING	JOYSTICK COM FAILURE
LUBE FAULT RESET EXCEEDED CALL SHOP	LOW VOLTAGE (UNDER 22V)	HYDRAULIC OIL LEVEL LOW ALRM	GROUND E/STOP ACTIVATED
ENGINE OVERSPEED WARNING	TANK MODULE COM FAILURE		

CONTROLLER DIMENSIONS

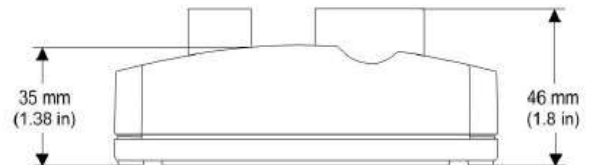
Unit dimensions from the top:



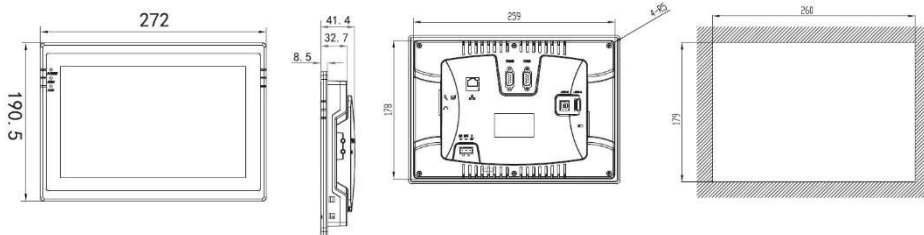
SPECIFICATIONS

Supply: 9-32VDC
 Protection: IP67
 Operating Temperature: -40 / 85°

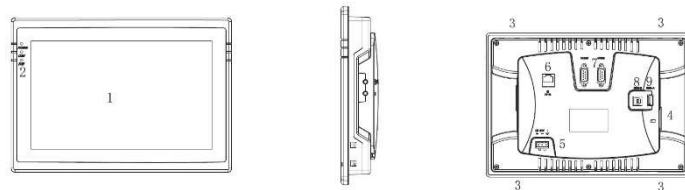
Unit dimensions from the side:



TOUCHSCREEN DIMENSIONS



PI8102 installation size



PI8102 Components description

1	LCD and touch screen	2	Indicator light	3	Fixed buckle	4	SD card slot	5	Power slot
6	Network port	7	COM	8	USB-B	9	USB-A		

SPECIFICATIONS

Supply: 12-28VDC
 Protection Level: IP65 (Surface)
 Operating Temperature: -20 / 60°